



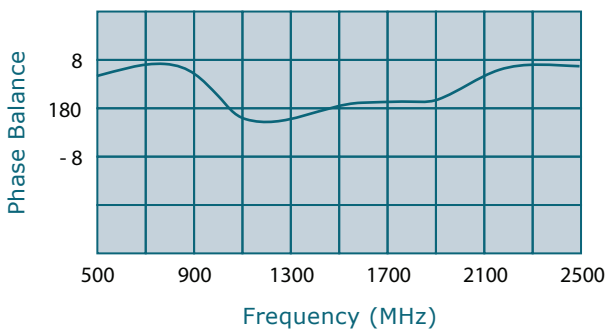
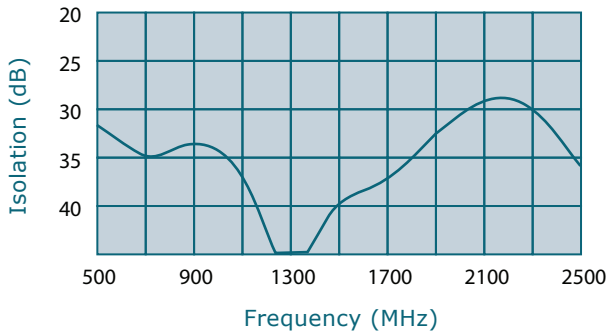
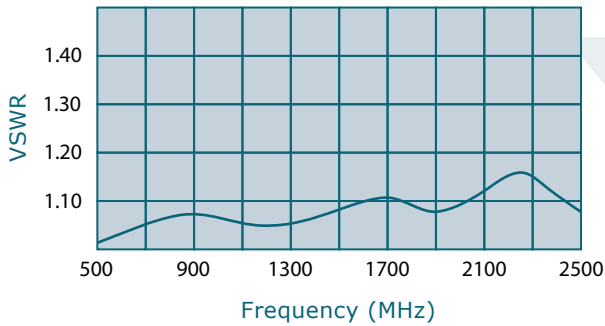
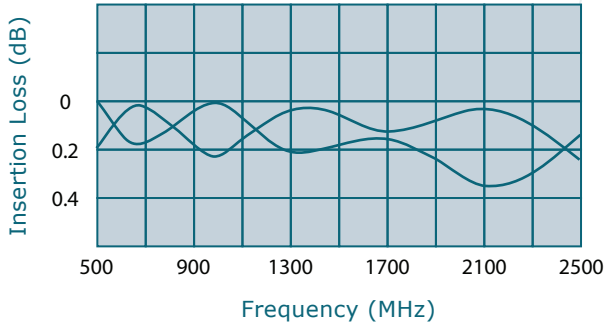
WERLATONE

SINCE 1965

Werlatone, Inc.
2095 Route 22
PO Box 47
Brewster, NY 10509
845.279.6187
FAX.279.7404
www.werlatone.com

2-Way(180 Deg.)Combiner/Divider

Model H7492



Frequency: 500-2500 MHz

Power: 200 W CW

Insertion Loss: 0.4 dB Max.

VSWR: 1.30:1 Max.

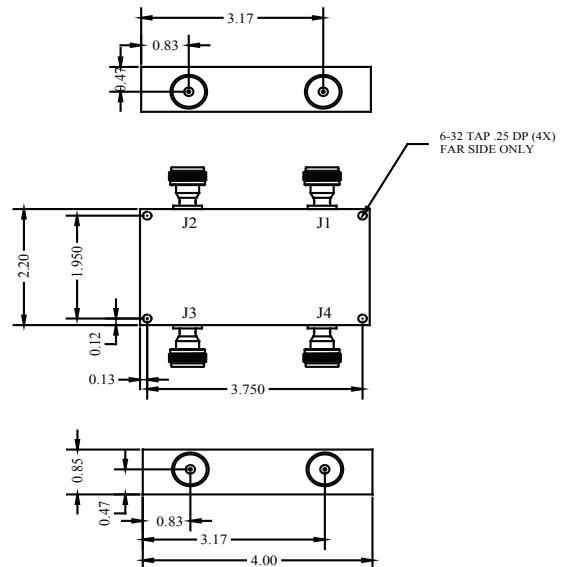
Isolation: 20 dB Min.

Phase Balance: +/- 8 Deg. Max.

Amplitude Balance: +/- 0.4 dB Max.

- All specifications guaranteed.
- Test data provided with each unit shipped.
- Alternate connector configurations upon request.

Model	Connectors	
	J1	J2-J4
H7492-10	N Female	N Female
H7492-12	N Female	SMA
H7492-102	SMA	SMA



high power RF devices